



Diagnostic Exercise

From The Davis-Thompson Foundation*



Case #: 97 Month: May Year: 2018

Contributor: Erin K. Morris, DVM, Diplomate ACVP. WRAIR-NMRC. Forest-Glen Annex, MD.

Clinical History: This 13-year-old male rhesus macaque was euthanized because it had reached the end of its research life due to old age. This lesion is an incidental finding.

Necropsy Findings: There were no gross lesions on necropsy.

Microscopic Images:

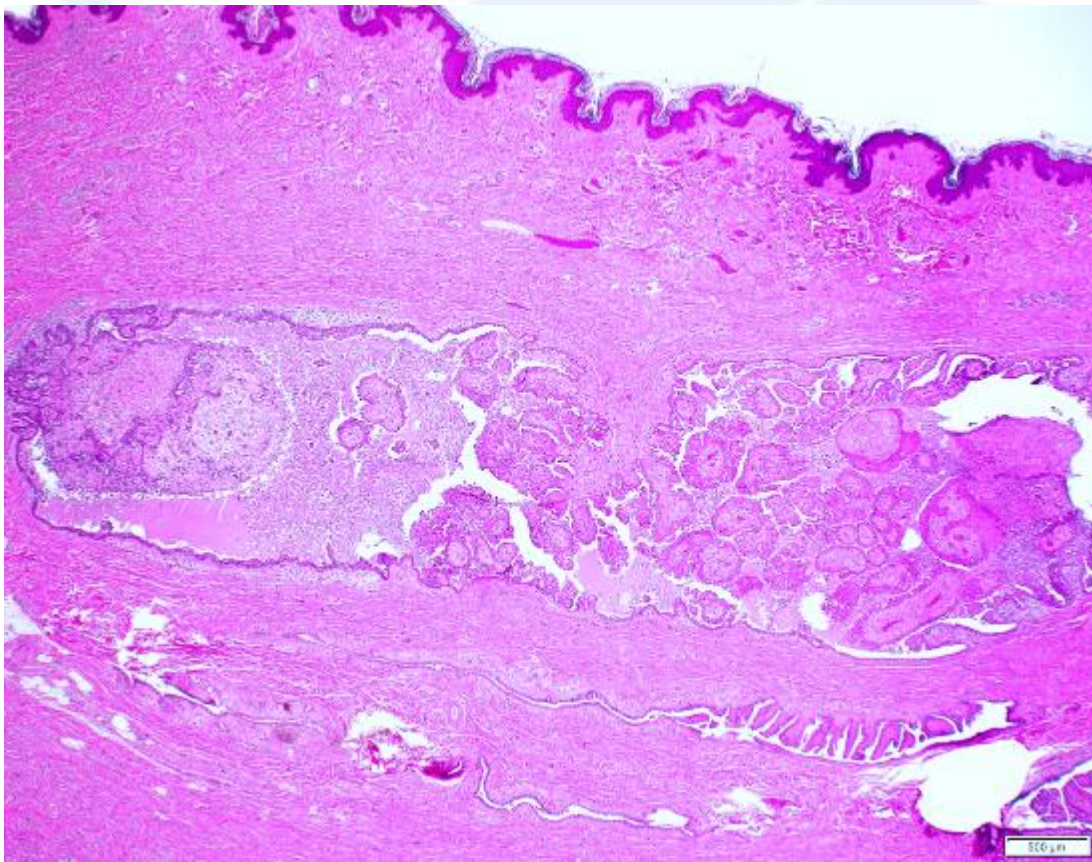


Figure 1. 20X, H&E stain.

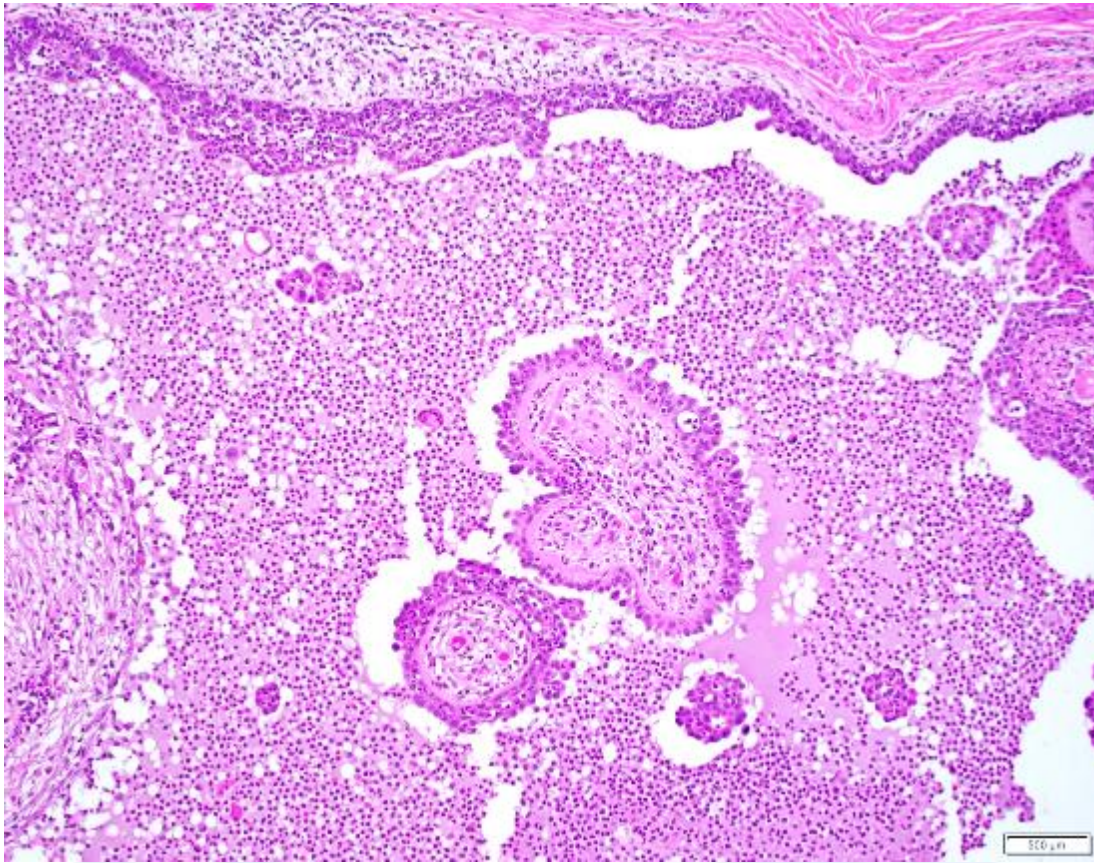


Figure 2. 100X, H&E stain.

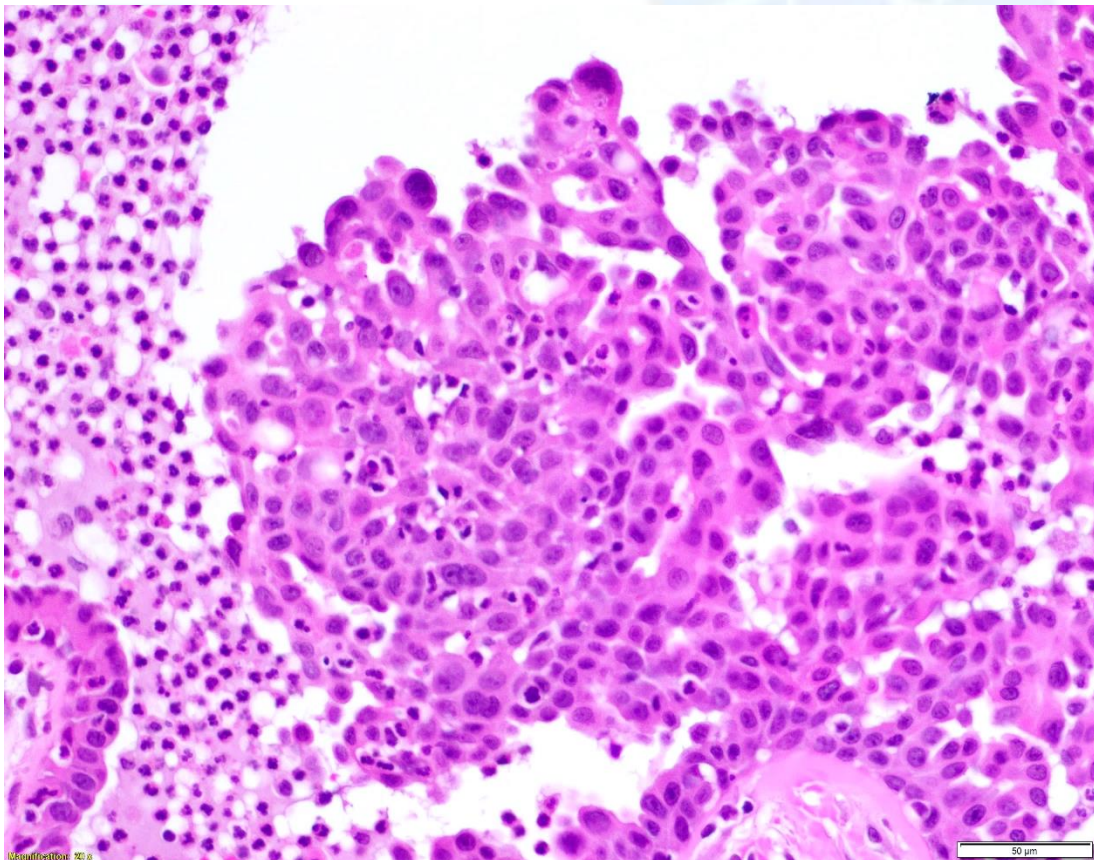


Figure 3. 200X, H&E stain.

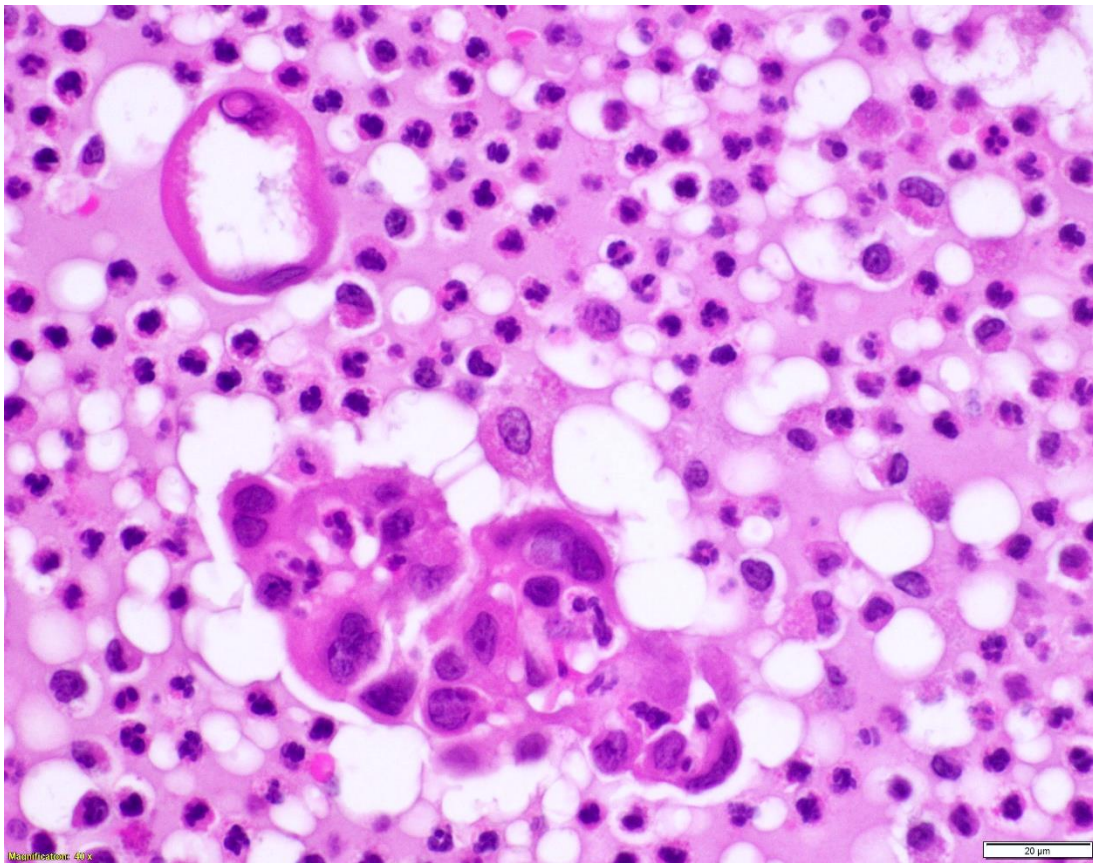


Figure 4. 400X, H&E stain.

Follow-up questions: Tissue; Histologic description; Morphologic diagnosis.

*The Diagnostic Exercises are an initiative of the **Latin Comparative Pathology Group (LCPG)**, the Latin American subdivision of The Davis-Thompson Foundation. These exercises are contributed by members and non-members from any country of residence. Consider submitting an exercise! A final document containing this material with answers and a brief discussion will be posted on the CL Davis website (http://www.cldavis.org/diagnostic_exercises.html).

Editor-in-chief: Vinicius Carreira

Associate Editor for this Diagnostic Exercise: Ingeborg Langohr