

Diagnostic Exercise

From The Davis-Thompson Foundation*

Case #: 89 Month: January Year: 2018

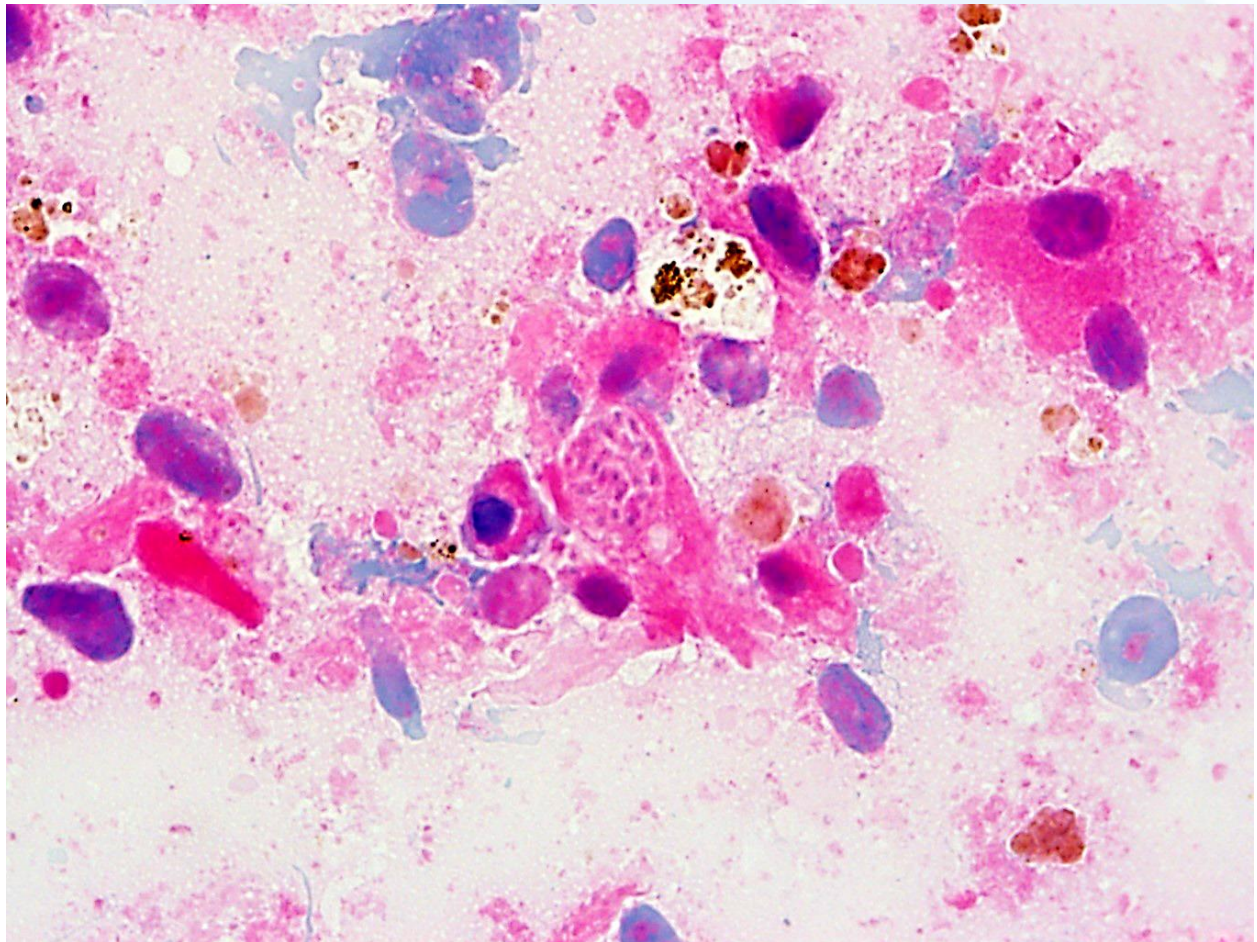
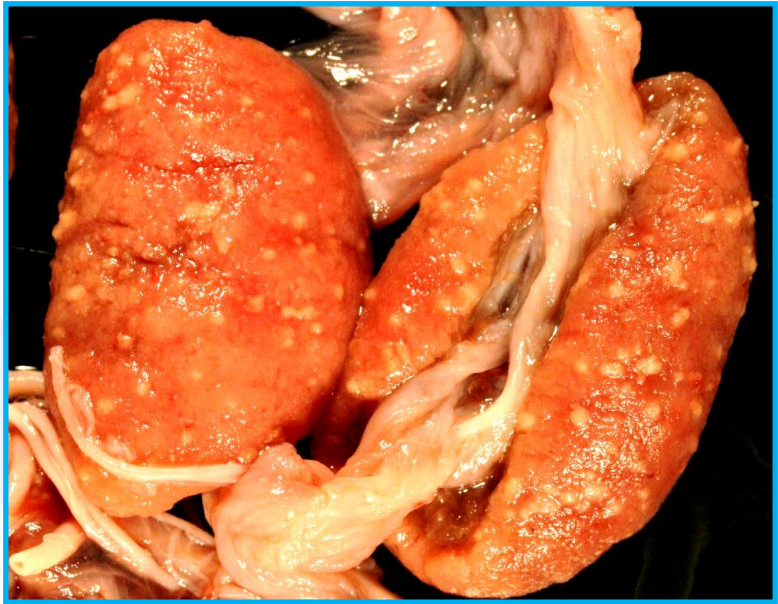
Contributors: Rahul B. Dange, Anatomic Pathology Resident, Mark Anderson, DVM, PhD, DACVP, California Animal Health and Food Safety Laboratory System, School of Veterinary Medicine, UC Davis, 620 W Health Science Dr, Davis, CA.

Clinical History: Three near term aborted goat foeti with respective placentas were submitted from a goat farm with a history of multiple near term abortions.

Necropsy Findings: Two of the three placentas had gross changes. There were numerous, 1-3 mm in diameter, gray white, circular foci in the cotyledons with occasional thickening of the pericotyledonary region with a soft gray exudate. No other remarkable gross lesions were seen the fetal tissues.

Gross and cytology impression smear image(s):





Impression smear of cotyledon, H&E stain

Follow-up questions: Morphologic Diagnosis; Microscopic Findings; Cause.

*The Diagnostic Exercises are an initiative of the **Latin Comparative Pathology Group (LCPG)**, the Latin American subdivision of The Davis-Thompson Foundation. These exercises are contributed by members and non-members from any country of residence. Consider submitting an exercise! A final document containing this material with answers and a brief discussion will be posted on the CL Davis website (http://www.cldavis.org/diagnostic_exercises.html).

Associate Editor for this Diagnostic Exercise: Patricia Pesavento

Editor-in-chief: Vinicius Carreira