

# Diagnostic Exercise

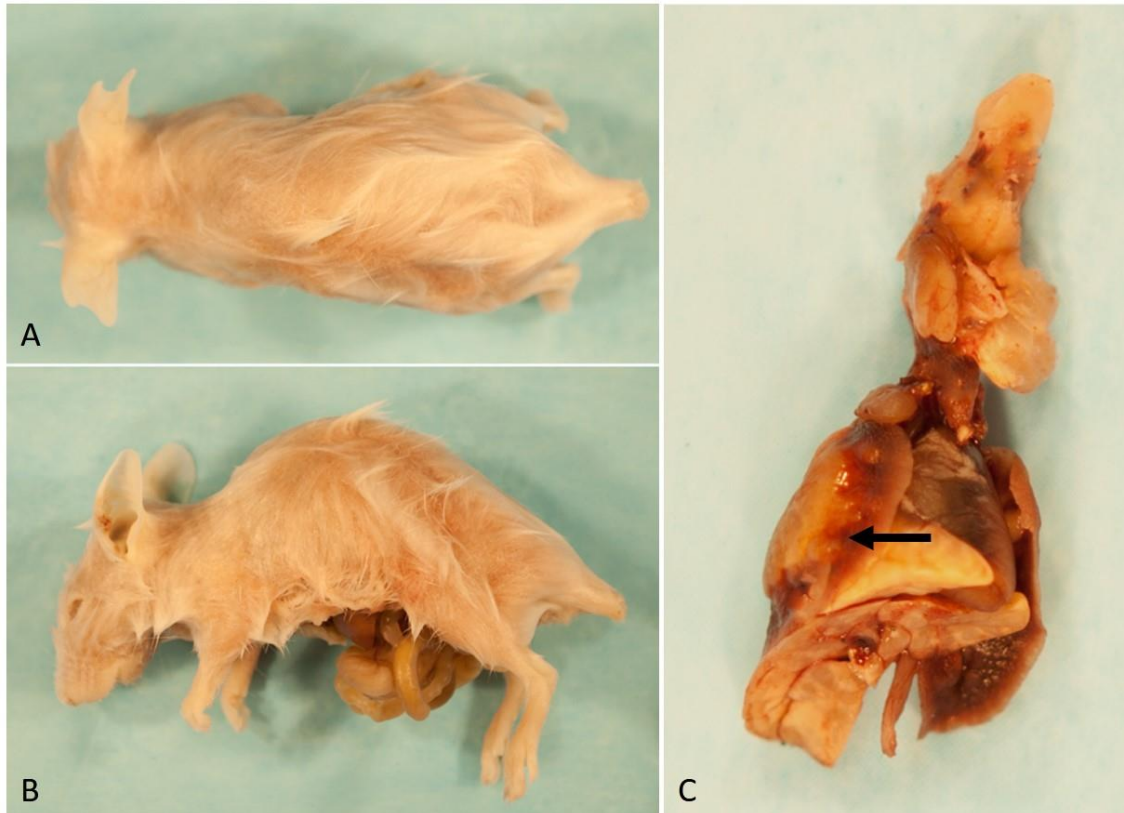
## From The Davis-Thompson Foundation\*

**Case #: 81 Month: June Year: 2017**

**Contributor:** Ingrid Cornax, DVM, PhD, MS and M. Gerard O’Sullivan MVB, MS, PhD, DACVP, Comparative Pathology Shared Resource, University of Minnesota, USA.

**Clinical history:** Female, ~16-week-old BALB/c byj background mouse housed in BSL-3 with a pet store mouse. BALB/c mice in this group showed chronic wasting (despite good appetite), perianal soiling, moist and scruffy appearing skin.

**Necropsy findings (Figure 1):** A white female mouse was received in formalin. The abdomen was open and viscera exposed. Moderate alopecia and crusting extended caudally from the crown of the head to the mid-dorsum (Fig 1A). Similar alopecia and crusting were noted bilaterally over the flanks and in the inguinal regions (Fig 1B). The right caudal, medial, and accessory lung lobes were diffusely firm and irregularly tan, yellow, and white (Fig 1C). The right cranial and left lung lobes contained similar appearing white to yellow multifocal to coalescing nodules flanked by areas of atelectasis (arrow). The intestines were empty. No other significant gross findings were observed.



**Figure 1**

**Follow-up questions:** For the lung and the skin, please provide 1) most likely histologic findings, 2) etiologic diagnoses (one for each organ), 3) other affected organs, 4) differential diagnoses.

\*The Diagnostic Exercises are an initiative of the **Latin Comparative Pathology Group (LCPG)**, the Latin American subdivision of The Davis-Thompson Foundation. These exercises are contributed by members and non-members from any country of residence. Consider submitting an exercise! A final document containing this material with answers and a brief discussion will be posted on the CL Davis website ([http://www.cldavis.org/diagnostic\\_exercises.html](http://www.cldavis.org/diagnostic_exercises.html)).

**Associate Editor for this Diagnostic Exercise:** Ingeborg Langohr

**Editor-in-chief:** Vinicius Carreira