

Latin Comparative Pathology Group

The Latin Subdivision of the CL Davis Foundation

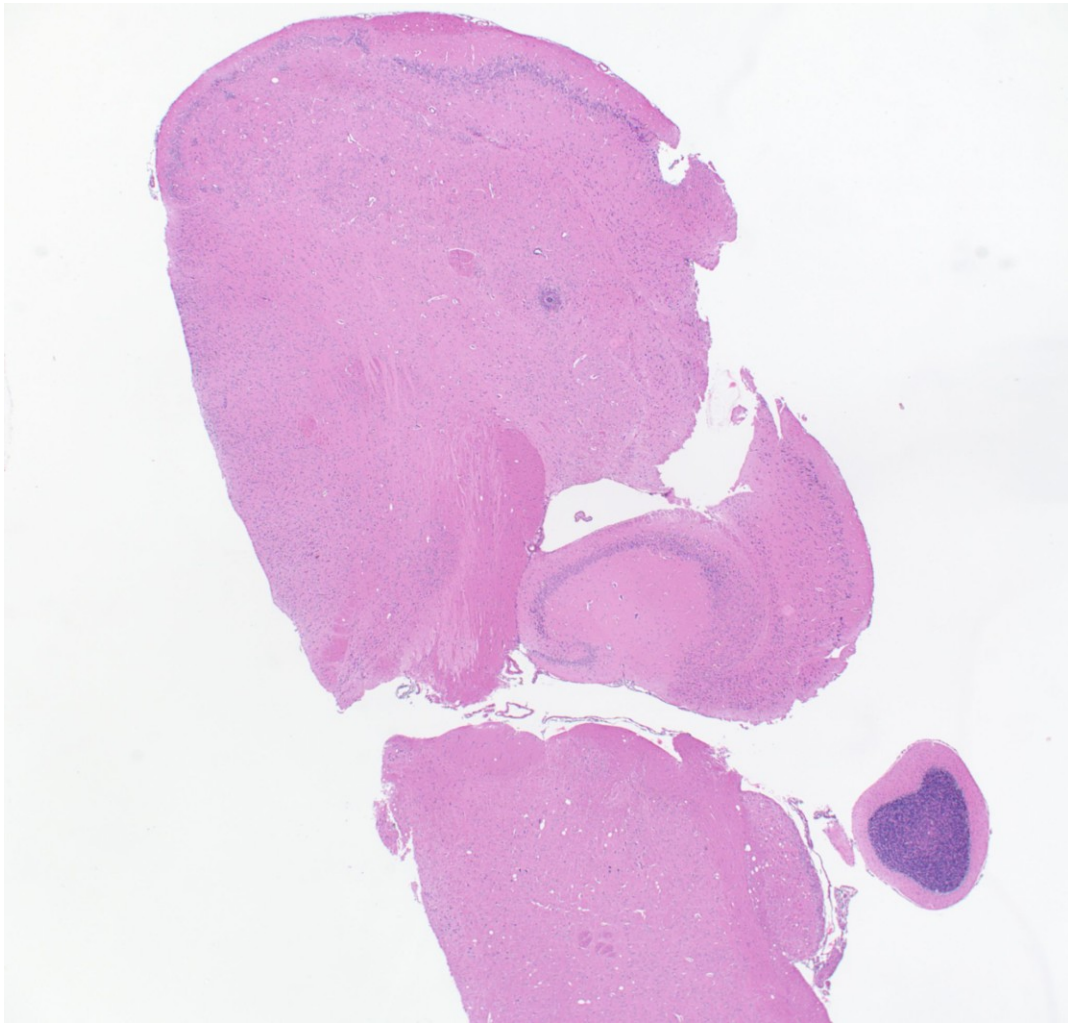
Diagnostic Exercise

Case #: 8 Month: March Year: 2011

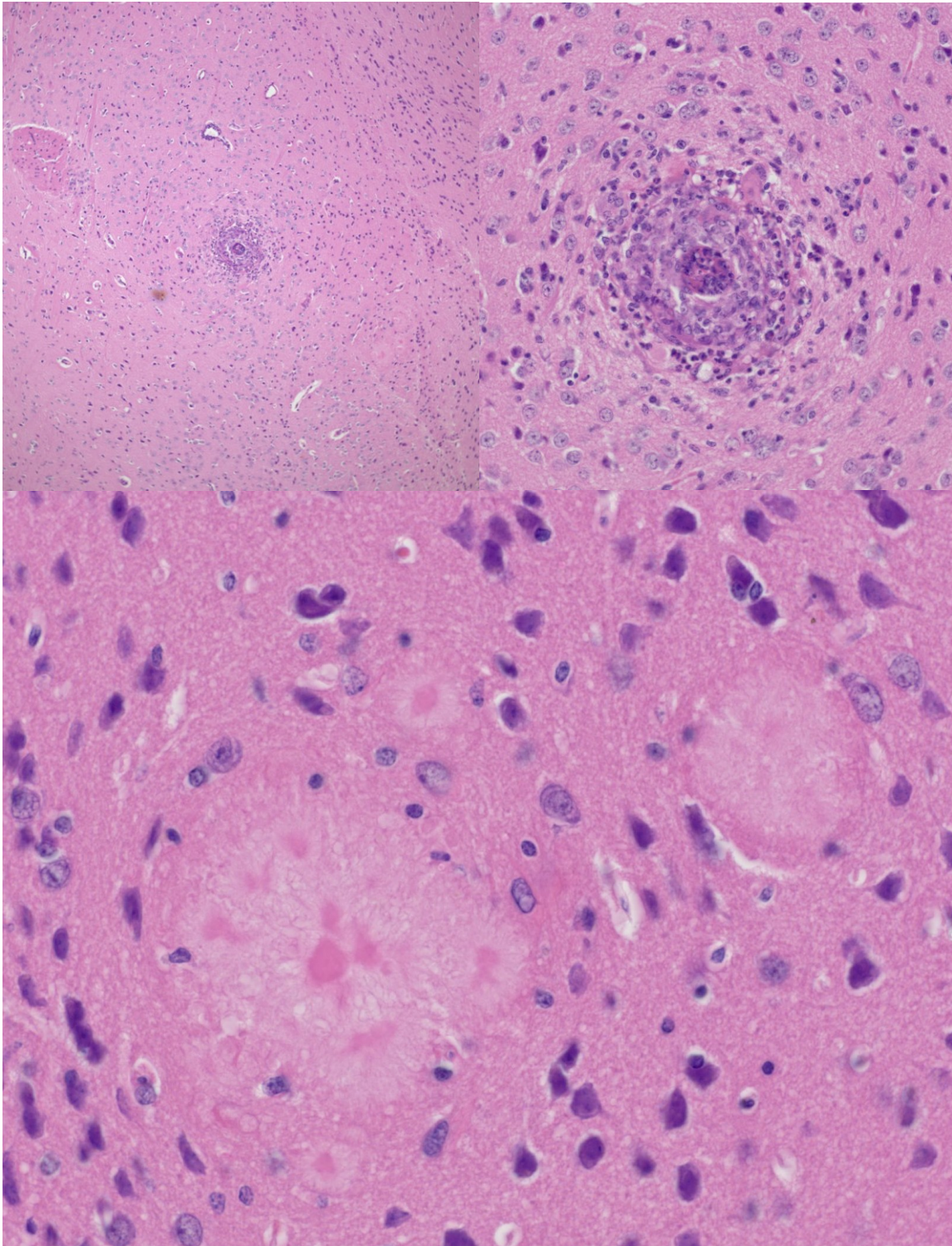
Contributor: Evelyne Polack, DVM, MS, PhD, DACVP
Principal Investigator, Comparative Pathology
Biogen Idec, Cambridge, MA

Signalment and History: 18 month-old female mouse, control in a research study,
euthanized as scheduled at the end of the study.

Necropsy Findings: No significant gross findings



(H&E, 2X)



(H&E; 10X, 10X and 40X respectively)

Follow-up questions: *Description, Morphologic diagnosis, Etiologic diagnosis, Immuno/Histochemical findings.*

Please send your comments/questions to the whole LCPG list by hitting "reply to all".
A final document containing this material with answers and a brief discussion will be
posted on the C. L. Davis website by the end of the current month
(http://www.cldavis.org/lcpg_english.html).