

# Latin Comparative Pathology Group

## The Latin Subdivision of the CL Davis Foundation

### Diagnostic Exercise

Case #: 4    Month: December    Year: 2010

**Contributor:** Ingrid D. Pardo DVM. MS, DACVP. Senior Principal Scientist, and Walter F. Bobrowski Certified Electron Microscopy Technician, Senior Scientist Pfizer Inc, Groton, CT

#### **Clinical History:**

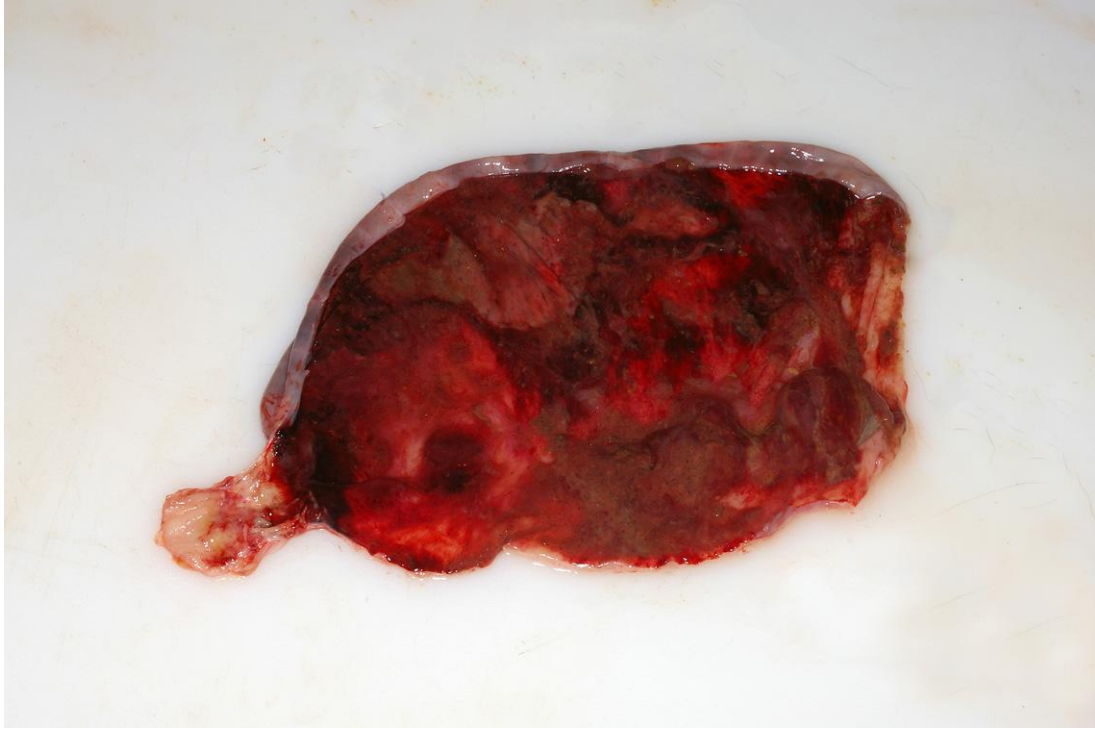
One week prior to necropsy this 5 year old female cynomolgus monkey was reported for inappetance, dehydration, and abdominal distention. Ileus secondary to menses associated inappetance was suspected and had improved over several days. Mild improvement was short-lived and her condition deteriorated over the weekend to include hypothermia and unsuccessful attempts to decompress both the large intestine and stomach. Abdominal fine needle aspirate was the only method that resulted in moderately successful decompression.

#### **Necropsy Findings:**

See attached pictures

#### **Gross images:**





**Morphologic diagnoses (3):**

**Differential diagnoses (at least 2):**