



# Latin Comparative Pathology Group

## The Latin Subdivision of the CL Davis Foundation

### Diagnostic Exercise

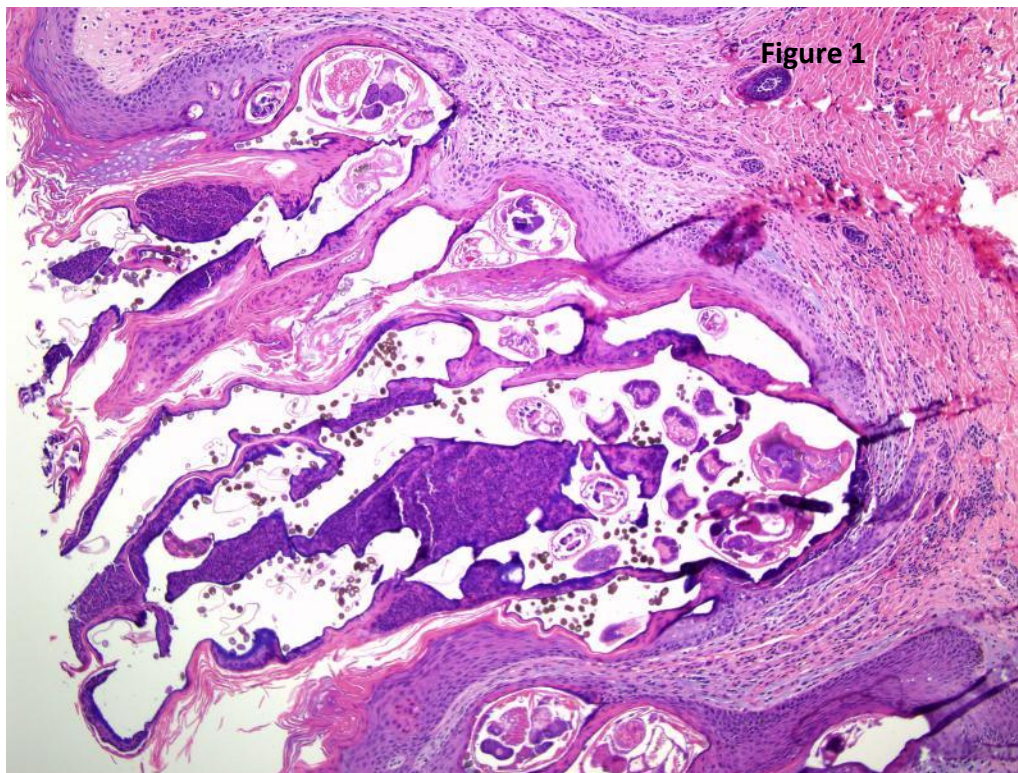
Case #: 19 Month: March Year: 2012

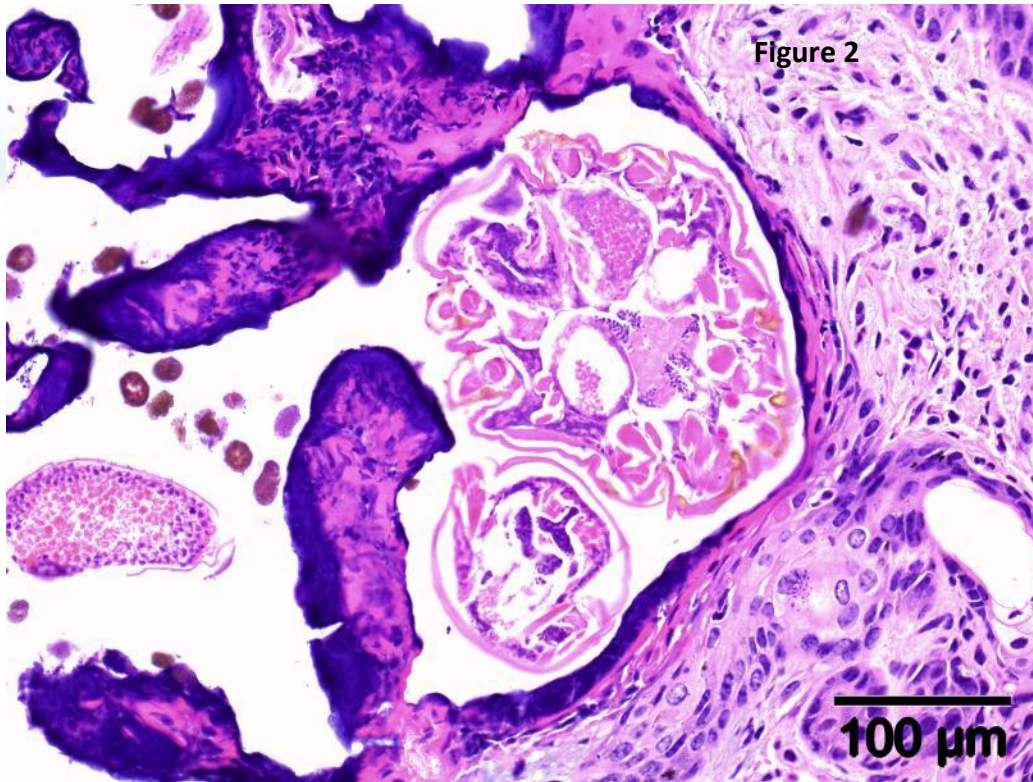
*\*\* Submissions must be in English. Additional Spanish and/or Portuguese translation is also welcome \*\**

**Contributor:** Akinyi Nyaoke, California Animal Health and Food Safety Laboratory System, San Bernardino Branch, University of California Davis.

**Clinical History:** Adult gray squirrel with history of lethargy, little locomotion, unresponsive and generalized skin lesions. On post-mortem examination, there were multiple alopecic and scaly foci in skin of the head, over the ventral thorax, over the lateral aspects of both forelimbs extending from the shoulder to the paw, and on the dorsal and medial aspects of the stifle joints. No significant lesions were noted in internal organs and brain.

**Gross and /or microscopic image:** HE, 40 X and 100 X respectively





**Follow-up questions:**

1. Histopathologic description [figures 1 & 2].
2. Morphologic diagnosis [ Figures 1 & 2].
3. Possible etiology

Please send your comments/questions to the whole LCPG list by hitting "reply to all".

A final document containing this material with answers and a brief discussion will be posted on the C. L. Davis website by the end of the current month ([http://www.cldavis.org/lcpg\\_english.html](http://www.cldavis.org/lcpg_english.html)).