



Diagnostic Exercise

From The Davis-Thompson Foundation*

Case #: 148 Month: August Year: 2020

Submissions must be in English

Contributors: Stella Maris Pereira de Melo*, DVM, MS candidate, Mariana Martins Flores*, DVM, MS, Doctor in Veterinary Pathology. *Laboratory of Veterinary Pathology, Universidade Federal de Santa Maria (UFSM), Santa Maria, Rio Grande do Sul, Brazil

Clinical History: This 6-month-old female Merino sheep was submitted for necropsy after a two-month history of incoordination, circling, hypermetria and head tilt. The sheep died spontaneously. It came from a farm with approximately 70 sheep within the same age range, 10 of which had died within the last months with similar clinical signs. No sick animals had responded to any antibiotic treatment.

Necropsy Findings: In the brain, an 8 x 3.5 x 3 cm fluid-filled cyst replaced part of left cerebral hemisphere (Figure 1). The cyst had numerous 1 mm white structures attached to the inner surface of the cyst wall (Figure 1). The histologic appearance of the cyst is presented in Figures 2 and 3. The necropsy was otherwise unremarkable.

Gross and Microscopic Images:

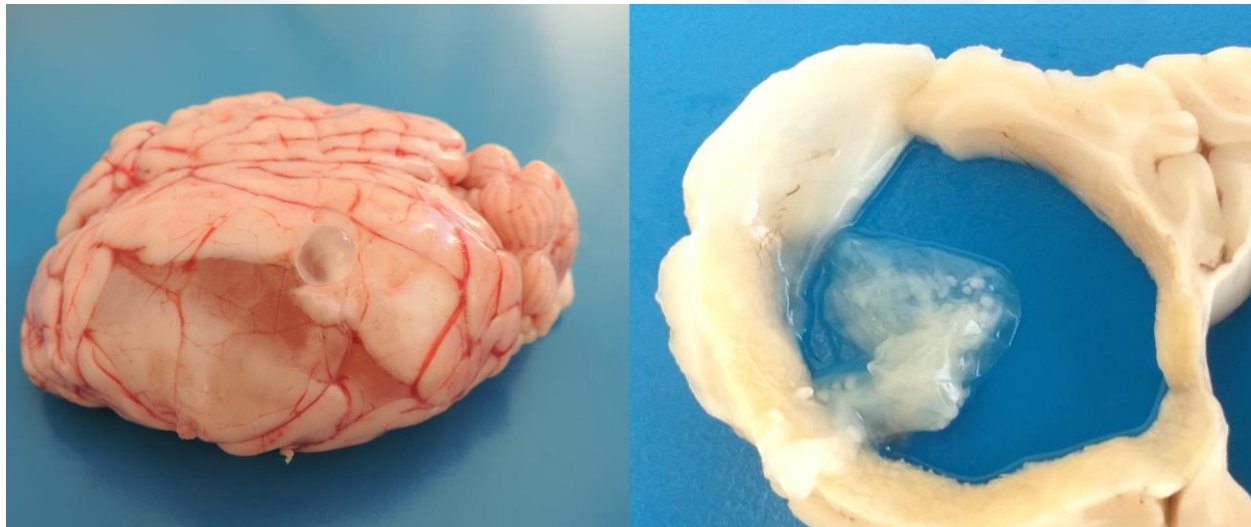


Figure 1

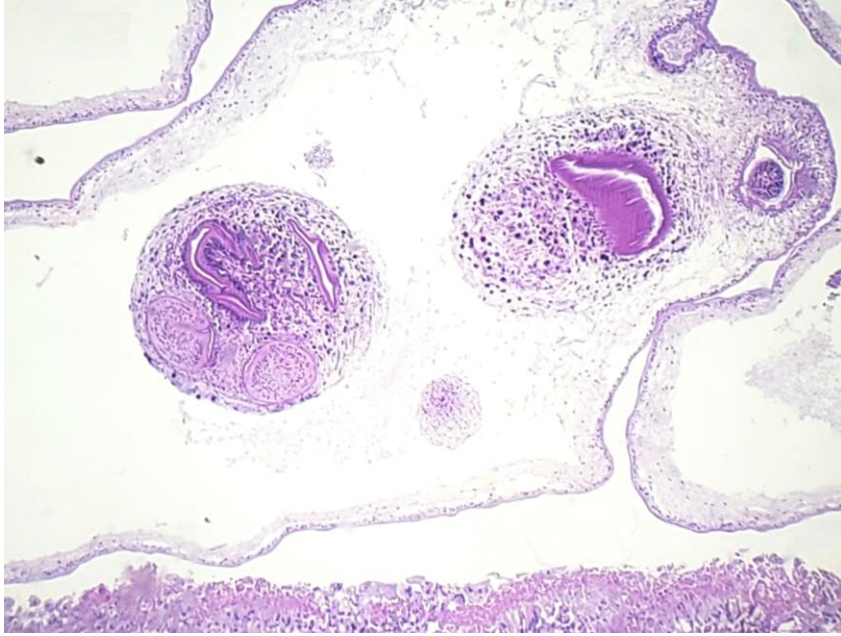


Figure 2

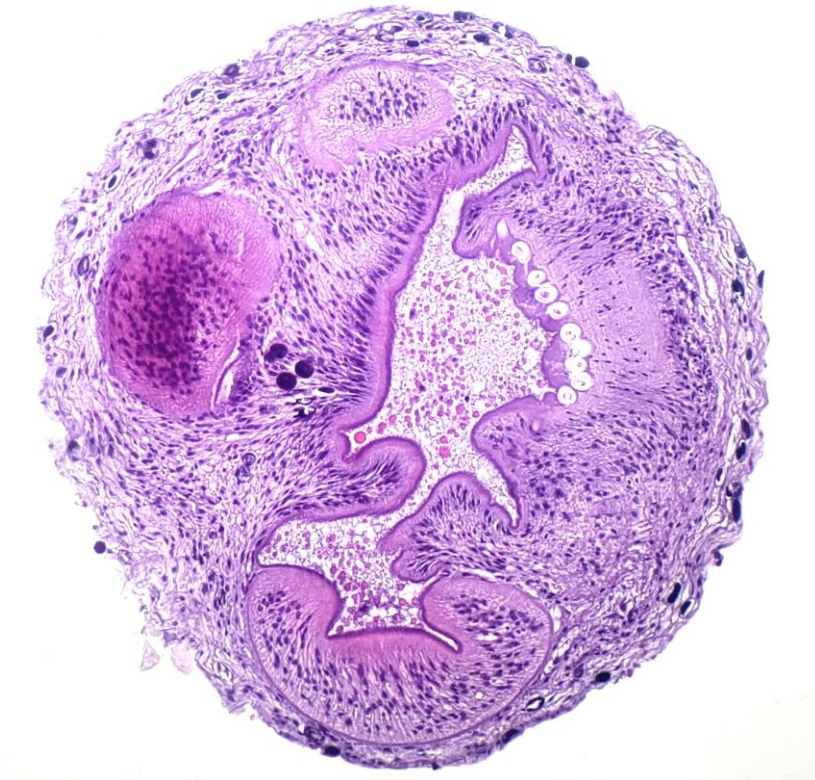


Figure 3

Follow-up Questions:

1. Provide a morphologic diagnosis.

2. Describe the histological aspects of organisms in Figures 2 and 3.

3. Describe the pathogenesis.

*The Diagnostic Exercises are an initiative of the **Latin Comparative Pathology Group (LCPG)**, the Latin American subdivision of The Davis-Thompson Foundation. These exercises are contributed by members and non-members from any country of residence. Consider submitting an exercise! A final document containing this material with answers and a brief discussion will be posted on the CL Davis website (http://www.cldavis.org/diagnostic_exercises.html).

Associate Editor for this Diagnostic Exercise: Mariana Flores

Editor-in-chief: Claudio Barros