



Diagnostic Exercise

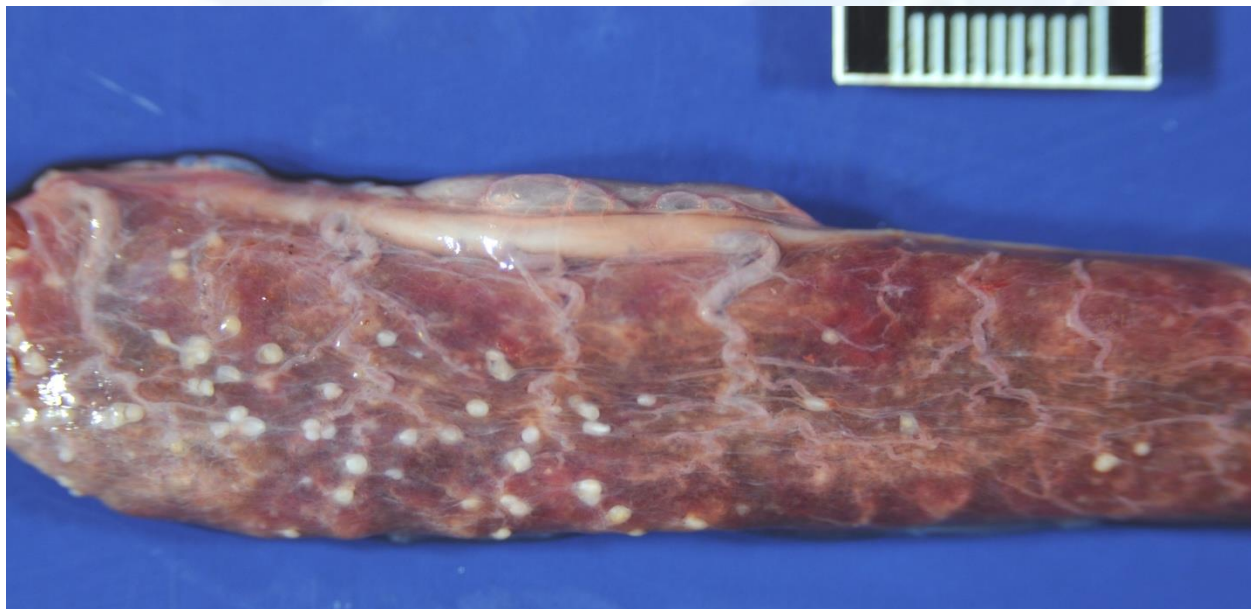
From The Davis-Thompson Foundation*

Case #: 138 Month: February Year: 2020

Contributor: Rebecca Radisic, School of Veterinary Medicine, UC Davis, 4th-year veterinary student; Sebastian Carrasco, DVM, MPVM, MSc, PhD, Comparative Pathologist, Massachusetts Institute of Technology, Division of Comparative Medicine.

Clinical History: This is tissue from a twenty-four-year old, female Gopher Snake (*Pituophis catenifer*) from a zoo collection that was presented, after decision for euthanasia, to the UC Davis Anatomic Pathology service for necropsy with a history of progressive anorexia, weight loss, and anemia. This patient had a previous (5 years prior) cholecystectomy followed by antimicrobial therapy for *Mycobacterium chelonae* infection of the gallbladder.

Necropsy Findings: At necropsy, this Gopher Snake was in poor nutritional condition based on moderately decreased intracoelomic fat stores and markedly decreased epaxial musculature. There were multifocal plaque-like lesions and nodules infiltrating the lung, spleen, and pancreas. Specifically, the lung was diffusely dark-red and contained 60-80, pale tan, round, slightly raised nodules affecting ~40% of the pulmonary surface. The pancreas and spleen contained scattered similar nodules throughout the parenchyma.



Follow-up Questions: What is your morphologic diagnosis? What are key histologic features? What diagnostic tests are indicated (special stains, IHC, culture, etc.)?

*The Diagnostic Exercises are an initiative of the **Latin Comparative Pathology Group (LCPG)**, the Latin American subdivision of The Davis-Thompson Foundation. These exercises are contributed by members and non-members from any country of residence. Consider submitting an exercise! A final document containing this material with answers and a brief discussion will be posted on the CL Davis website (http://www.cldavis.org/diagnostic_exercises.html).

Associate Editor for this Diagnostic Exercise: Patricia Pesavento

Editor-in-chief: Vinicius Carreira