

# Diagnostic Exercise

## From The Davis-Thompson Foundation\*

Case #: 125 Month: July Year: 2019

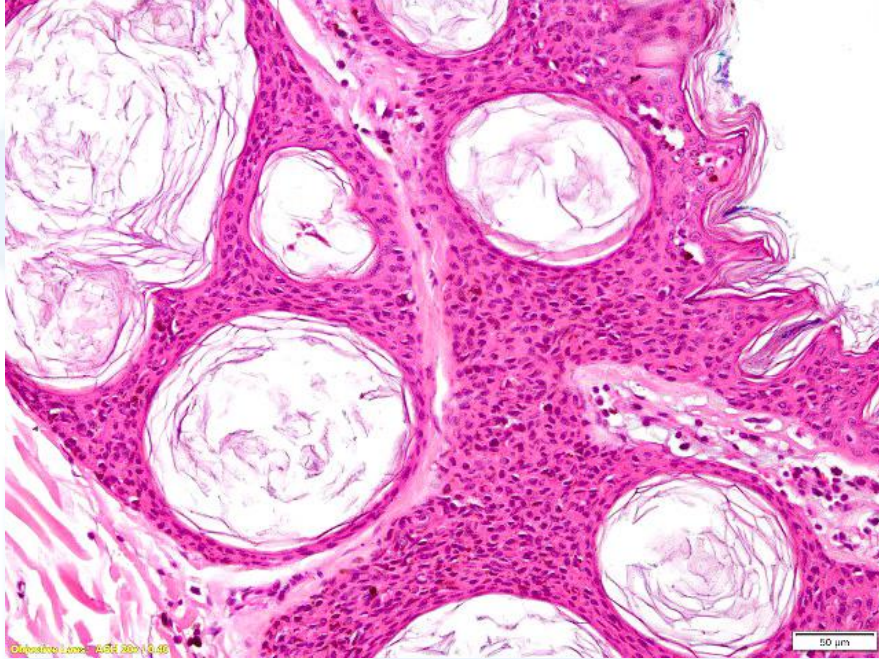
**Contributor:** Dr. Andrea Schaffer-White (BVSc, B.A., Postgrad.Dip.Ed.), Independent Veterinary Pathology, Underwood, Brisbane, Australia.

**Clinical History:** Seven-year-old, female spayed Cavalier Poodle cross presented for routine vaccination during which a small, ca. 2 mm in diameter, slightly raised and pigmented lesion was noticed in the skin on the dog's right flank. An excisional biopsy was performed and the lesion was submitted for routine histopathology.

**Microscopic Findings:**



Figure 1. hematoxylin & eosin (2X)



**Figure 2. hematoxylin & eosin (20X)**

**Follow-Up Questions:** Morphologic diagnosis and differentials.

\*The Diagnostic Exercises are an initiative of the **Latin Comparative Pathology Group (LCPG)**, the Latin American subdivision of The Davis-Thompson Foundation. These exercises are contributed by members and non-members from any country of residence. Consider submitting an exercise! A final document containing this material with answers and a brief discussion will be posted on the CL Davis website ([http://www.cldavis.org/diagnostic\\_exercises.html](http://www.cldavis.org/diagnostic_exercises.html)).

**Associate Editor for this Diagnostic Exercise:** Rachel Allavena

**Editor-in-chief:** Vinicius Carreira