



Diagnostic Exercise

From The Davis-Thompson Foundation*

Case #: 110 Month: December Year: 2018

Contributors: José Cesar Menk Pinto Lima^{1,2}, DVM; Tatiane Terumi Negrão Watanabe², DVM, MS, PhD; Shannon Connard³, BS, DVM; Heidi Banse³, BS, DVM, PhD, DACVIM; Ingeborg M. Langohr², BS, DVM, MS, PhD, DACVP.

¹ Laboratório de Patologia Veterinária (LAPAVET), Santo André, SP, Brazil; ² Louisiana State University School of Veterinary Medicine, Department of Pathobiological Sciences and Louisiana Animal Disease Diagnostic Laboratory, Baton Rouge, LA 70803; ³ Louisiana State University School of Veterinary Medicine, Department of Veterinary Clinical Sciences, Baton Rouge, LA 70803.

Clinical History: A 3-year-old, female miniature donkey presented 2 weeks post-partum with a 5-day history of anorexia, lack of fecal production, and a fractured molar. Decreased borborygmi in all four quadrants and dark pink to purple mucous membranes with a prolonged capillary refill time of 3 seconds were noted. Abdominal radiographs and gastroscopy showed evidence of gastric impaction. The donkey's health declined despite aggressive treatment and humane euthanasia followed by postmortem examination was elected.

Gross Images:

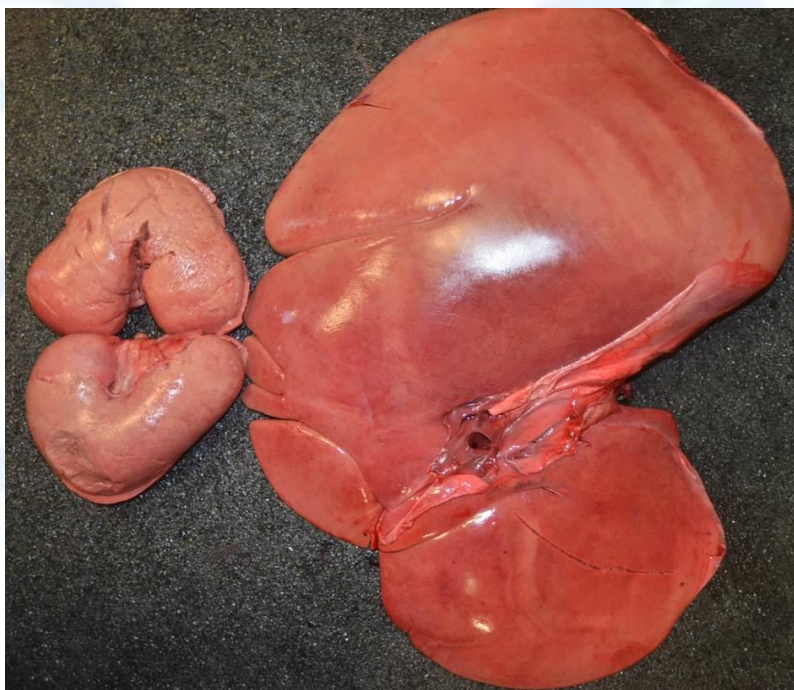


Figure 1

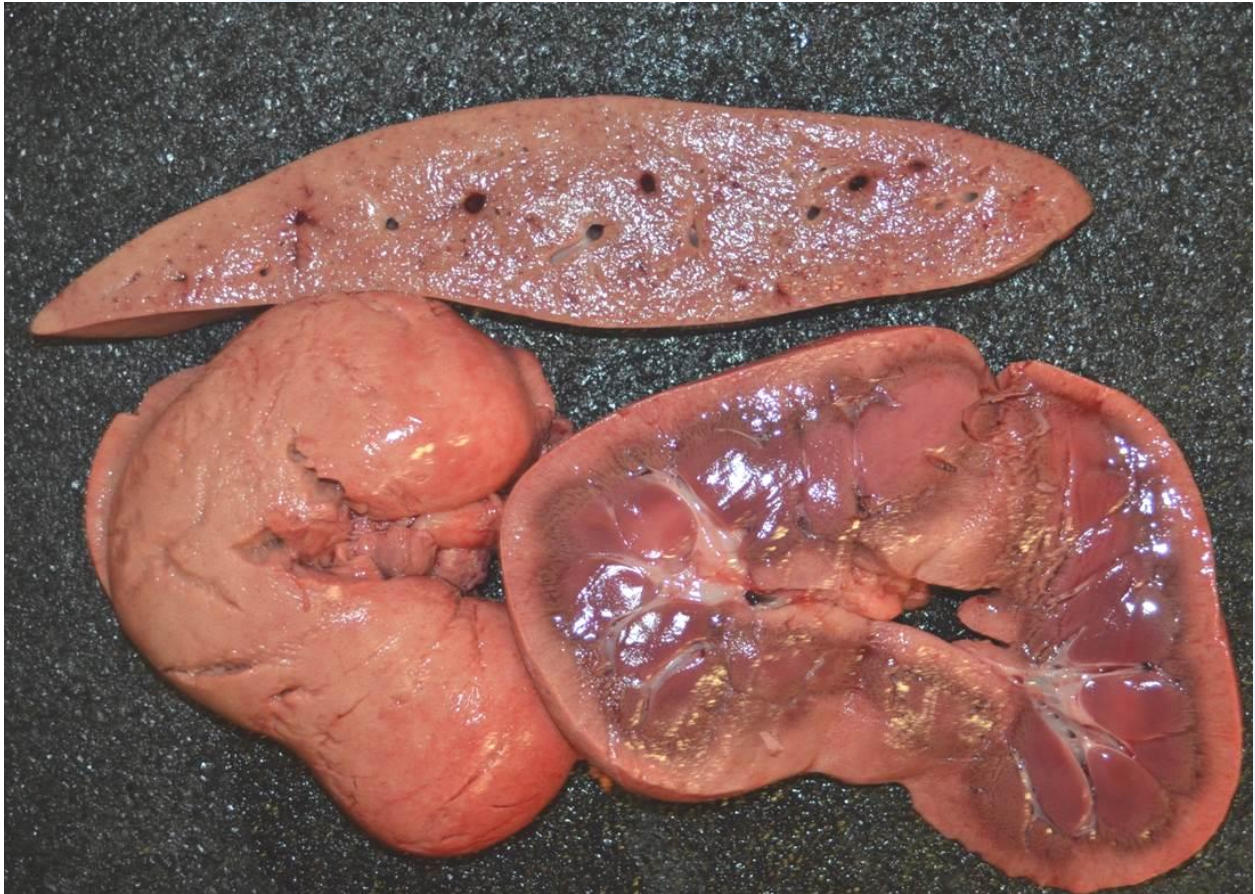


Figure 2

Follow-up Questions: Gross description, Morphologic diagnosis(es), and Condition.

*The Diagnostic Exercises are an initiative of the **Latin Comparative Pathology Group (LCPG)**, the Latin American subdivision of The Davis-Thompson Foundation. These exercises are contributed by members and non-members from any country of residence. Consider submitting an exercise! A final document containing this material with answers and a brief discussion will be posted on the CL Davis website (http://www.cldavis.org/diagnostic_exercises.html).

Associate Editor for this Diagnostic Exercise: Ingeborg Langohr

Editor-in-chief: Vinicius Carreira