

Diagnostic Exercise

From The Davis-Thompson Foundation*

Case #: 101 Month: July Year: 2018

Contributors: Dr. Sarah Kaye BVSc (hons), Pathology intern; Assoc. Prof. Dr. Chiara Palmieri, DVM, PhD, Dipl. ECVP, Supervising pathologist. School of Veterinary Science, University of Queensland, Gatton 4343, Australia.

Clinical History: Adult Australian Green Tree Frog (*Litoria caerulea*). The clinician reports that the frog was found on the ground "unable to hop well" and had a large mass on the left hock, too large to surgically remove.

Necropsy Findings: The left hindlimb has a 3.2 x 1.8 x 2.6 cm exophytic tan dermal mass.

Microscopic Images:

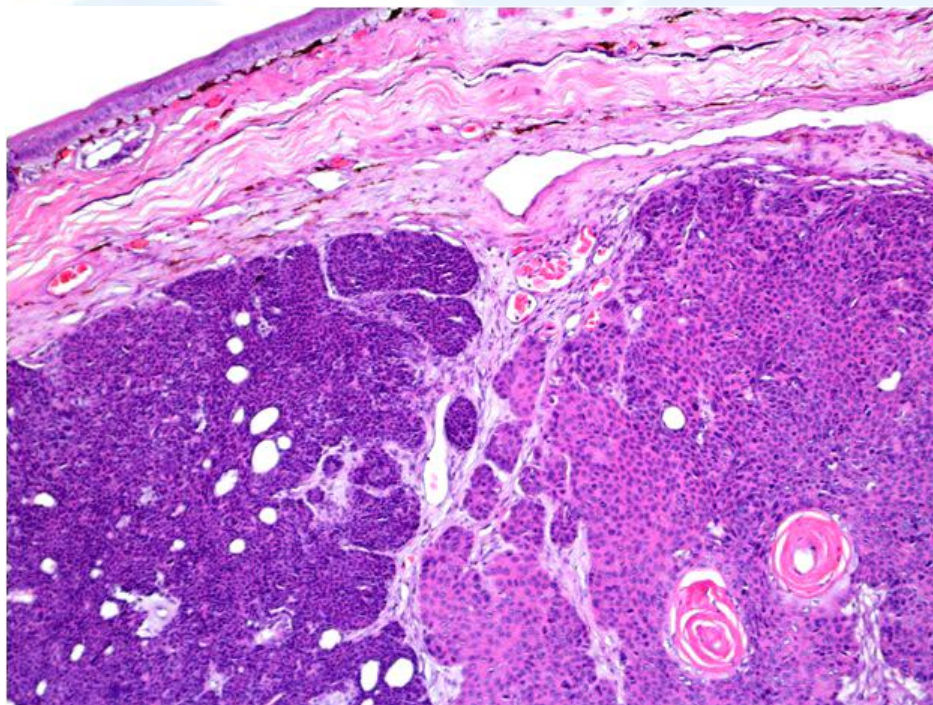


Figure 1. Australian Green Tree Frog. Dermal mass. Hematoxylin and eosin, 10x objective.

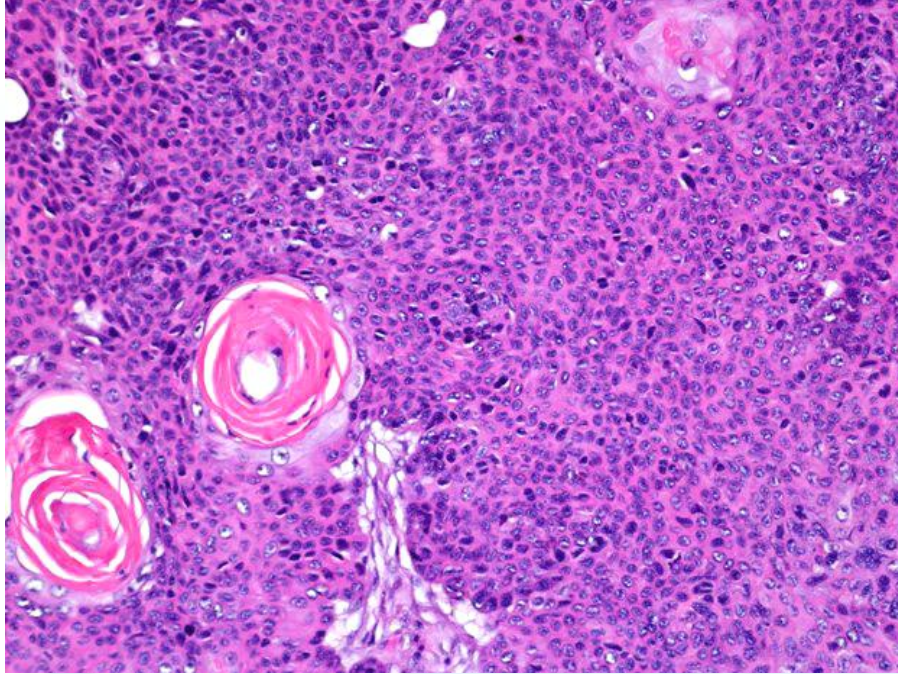


Figure 2. Australian Green Tree Frog. Dermal mass. Hematoxylin and eosin, 20x objective.

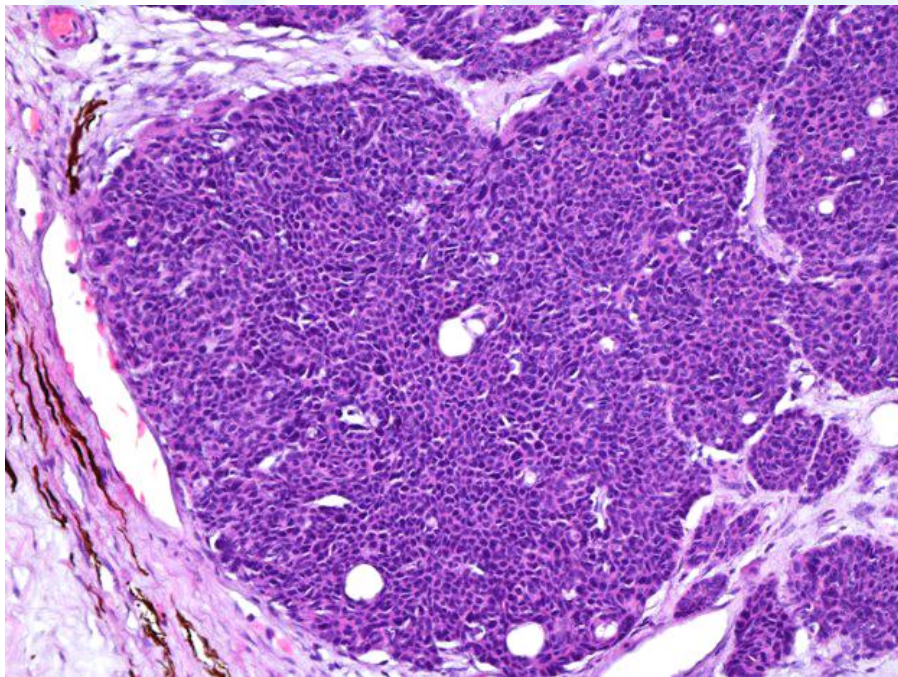


Figure 3. Australian Green Tree Frog. Dermal mass. Hematoxylin and eosin, 20x objective.

Follow-up Questions: Description, Morphologic diagnosis.

*The Diagnostic Exercises are an initiative of the **Latin Comparative Pathology Group (LCPG)**, the Latin American subdivision of The Davis-Thompson Foundation. These exercises are contributed by members and non-members from any country of residence. Consider submitting an exercise! A final document containing this material with answers and a brief discussion will be posted on the CL Davis website (http://www.cldavis.org/diagnostic_exercises.html).

Associate Editor for this Diagnostic Exercise: Rachel Allavena

Editor-in-Chief: Vinicius Carreira